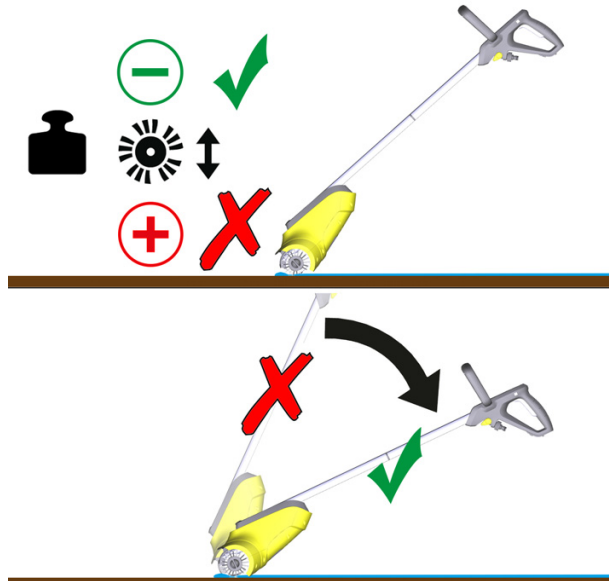


PCL 4



English

Dear Customer,
Actuating the motor overload switch causes the device to switch off unexpectedly. This is not due to an error with the device but an intentional protective function. Please observe the following instructions for use:

- Use the device on wooden, stone, or composite material (WPC) surfaces only.
- Always use suitable brushes.
- Do not exert too much pressure on the device during cleaning.
- Hold the device at a flatter angle during cleaning.

Should the device unexpectedly switch off when in use, allow it to cool for at least 10 minutes. The motor circuit breaker resets automatically and the device is ready for operation again. In case of a repeated shut-down, please reduce the pressure on the brushes while cleaning and hold the device at a flatter angle!

Please observe the operating instructions supplied with the device, also. These instructions can be found as required at www.kaercher.com.

